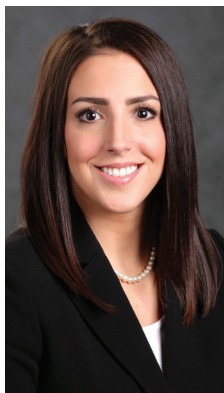


TARA M. FARRELL, O.D.



SPECIALTIES

- Comprehensive Eye Exams
- Optometric Management of Ocular Disease Including:
 - Glaucoma
 - Dry Eye
 - Macular Degeneration
 - Cataracts
- Diabetic Eye Disease
- Contact Lens Fitting and Evaluation
- Refractive Surgery Evaluation and Co-Management

EDUCATION

Pennsylvania College of Optometry, Philadelphia, PA,
O.D. (2007)

B.S. Visual Sciences (2004)

University of Pittsburgh, Pittsburgh, PA,

B.S. Biological Sciences (2003)

EXPERIENCE

Eye Care Specialists, Kingston, PA (2011-Present)

Independent Optometrist, Wilkes-Barre, PA (2007-2001)

Eye Care Specialists (Externship), Kingston, PA (2007)

Albert Einstein Medical Center (Externship),

Philadelphia, PA (2006-2007)

Northeastern Eye Institute (Externship), Scranton, PA (2006)

Pediatric/Binocular Vision Clinic, The Eye Institute,

Pennsylvania College of Optometry (Externship),

Philadelphia, PA (2006)

Family Eye Care of NEPA (Externship), Honesdale, PA (2006)

AWARDS AND HONORS

PCO Clinical Honors & Clinical Excellence in GP Lenses

Omega National Honor Fraternity, University of Pittsburgh

Dean's List, University of Pittsburgh

Vision Care Institute Program, Jacksonville, FL (2006)

MEMBERSHIPS

American Optometric Association

Pennsylvania Optometric Association

Northeastern Pennsylvania Optometric Society

Pennsylvania Diabetic Health Alliance



EYE CARE SPECIALISTS

Because there's so much to see.

BERWICK

126 West Front Street
(570) 752-7458

BLOOMSBURG

1000 Market St., Suite 5
(570) 387-8760

DALLAS

40 Dallas Shopping Center
(570) 674-9001

HAZLETON

789 Airport Rd., Ste. 105
(570) 455-3391

KINGSTON

703 Rutter Avenue
(570) 288-7405

Revive
MEDSPA
AT EYE CARE SPECIALISTS

703 Rutter Ave., Ste. 101
Kingston
(570) 718-4800

NANTICOKE

9 North Market Street
(570) 735-3114

SCRANTON

425 Adams Avenue
(570) 558-3937

WEST PITTSSTON

170 Boston Avenue
(570) 602-1010



**SURGICAL
SPECIALTY
CENTER**

OF NORTHEASTERN PENNSYLVANIA

190 Welles Street, Suite 150,
Forty Fort
(570) 331-7615